

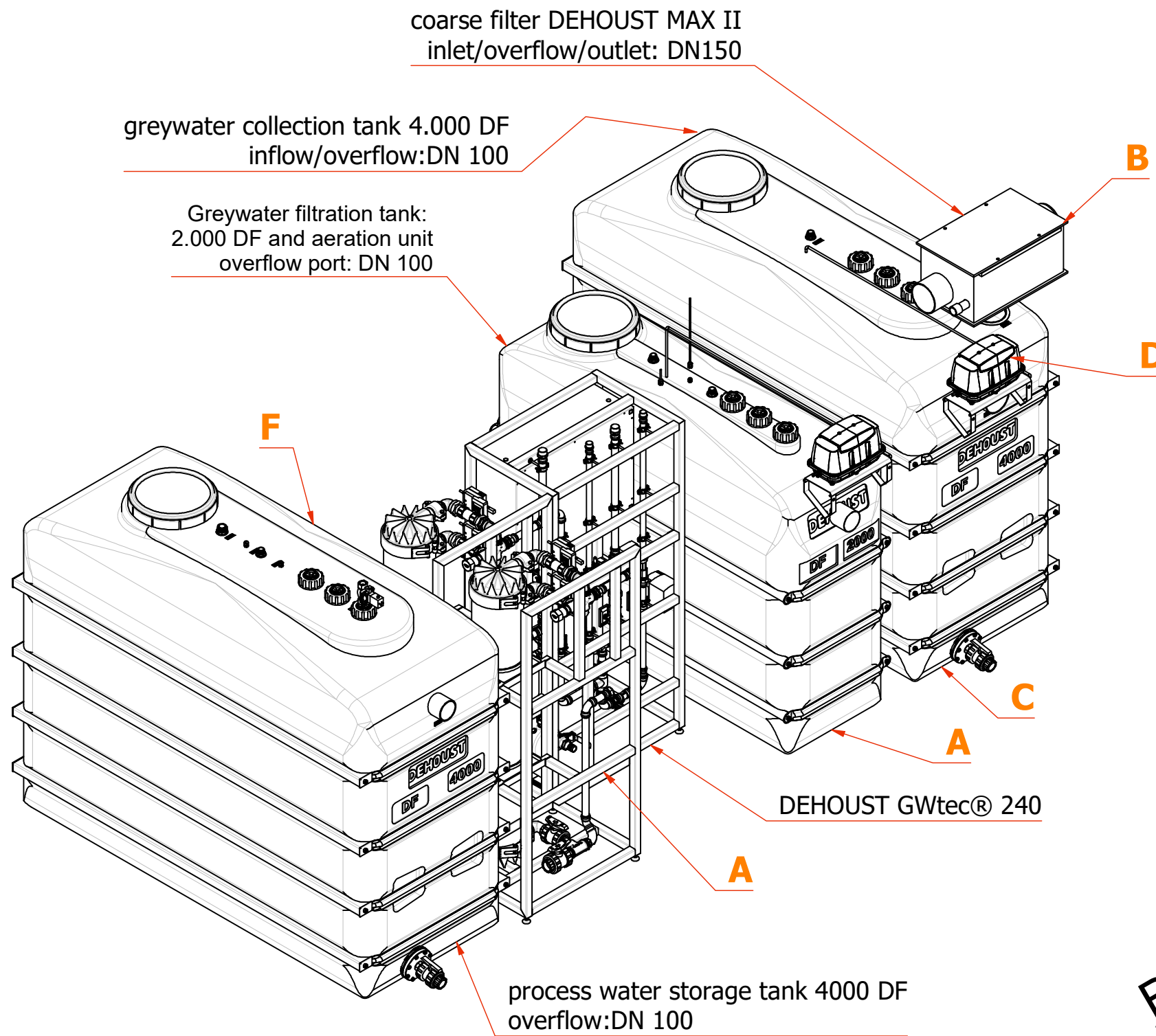
ISO Methode E

Bemerkungen/Comments:

Allgemeintoleranzen/General tolerances DIN 28005-1

Vorlage-Zeichnung-Nr.:

	Datum/Date	Name	Projekt-Nr.:	Artikel-Nr.:	Maßstab/Scale
Bearb.	30.08.2024	jpg		813372	
Gepr.			Kunde/Customer:		Werkstoff/Material
Norm.					
Medium			Kommission:		Gewicht/Weight
 <p>69181 Leimen Gutenbergstraße 5-7 Tel 06224/97020</p>			Behälterbezeichnung/Vessel designation		Behälter/Vessel-Nr.:
			Grauwasseranlage/Greywater System DEHOUST GWtec® 240_US_B		
			Zeichnungs/dwg-Nr.:	Auftrags/Order-Nr.:	Größe/Size: Blatt-Nr.: A4 1
			D631553		Blattzahl: 3



coarse filter DEHOUST MAX II
inlet/overflow/outlet: DN150

greywater collection tank 4.000 DF
inflow/overflow:DN 100

Greywater filtration tank:
2.000 DF and aeration unit
overflow port: DN 100

DEHOUST GWtec® 240

process water storage tank 4000 DF
overflow:DN 100

(A)
Type: DEHOUST GWtec® 240
Item: 813372
Max. treatment capacity: 10.000 litres/day
PVC flex hose:filtrate effluent 1" female thread, black, length 5m
weight: 190 kg

Greywater filtration tank: 1x PE HD 2.000 DF and aeration unit
overflow port: DN 100
drain valve:1 1/2" female thread
PVC flex hose:suction line 1" PVC flex hose blue, length 3 m
Empty weight: 115 kg

(B)
Type: coarse filter DEHOUST MAX II
Item: 812657
inlet/overflow/outlet: DN150
Connection backwash: 1" female; pmin: 1 bar; pmax: 2 bar
empty weight:15 kg

(C)
Type: greywater collection tank 4.000 litres
Item: 962059
inflow/overflow:DN 150
Drain valve:1 1/2" female thread
Empty weight: 235 kg

(D)
Type:Aeration unit for further PE HD greywater
collection tank
item:813440
PVC flex hose:3/4" female thread,red length 5m

(E)
Type: greywater batch pump DOC 3
Item: 813443
PVC flex hose:1" female thread, black, length 5m

(F)
Type: process water storage tank 4000 liters
Item: 962058
overflow:DN 100
Connection mains water back up: 1" female ; pmin: 1 bar; pmax: 10 bar
Emergency overflow DIN EN 1717:LxW 2 x 200 x 125 mm
Drain valve:1 1/2" female thread
Empty weight: 235 kg

Overall technical specification
Total weight:840 kg
electrical load:400 V / 16 A / 50 Hz / 2,75 kW

Backside

all dimensions in inch

Pipes not included in delivery:

In- and overflow pipe DN 150
Pressure line backwash pump DN 32 (1 1/4") from tank F to DEHOUST GWtec® A
Pressure line booster pump DN 25 (1") from DEHOUST GWtec® to coarse filter DEHOUST MAX II B

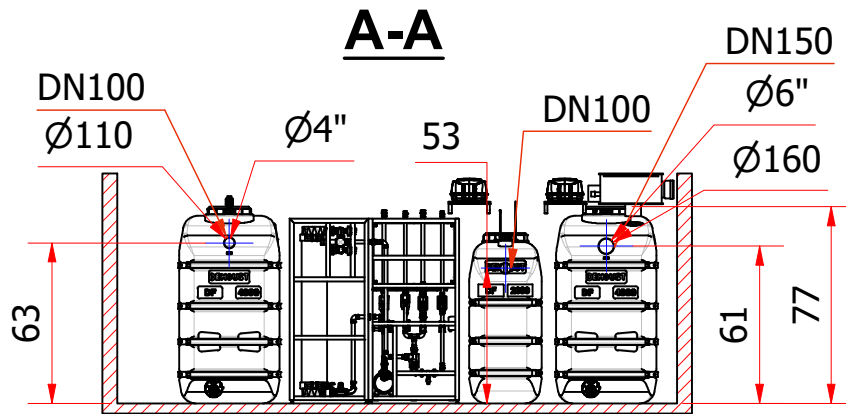
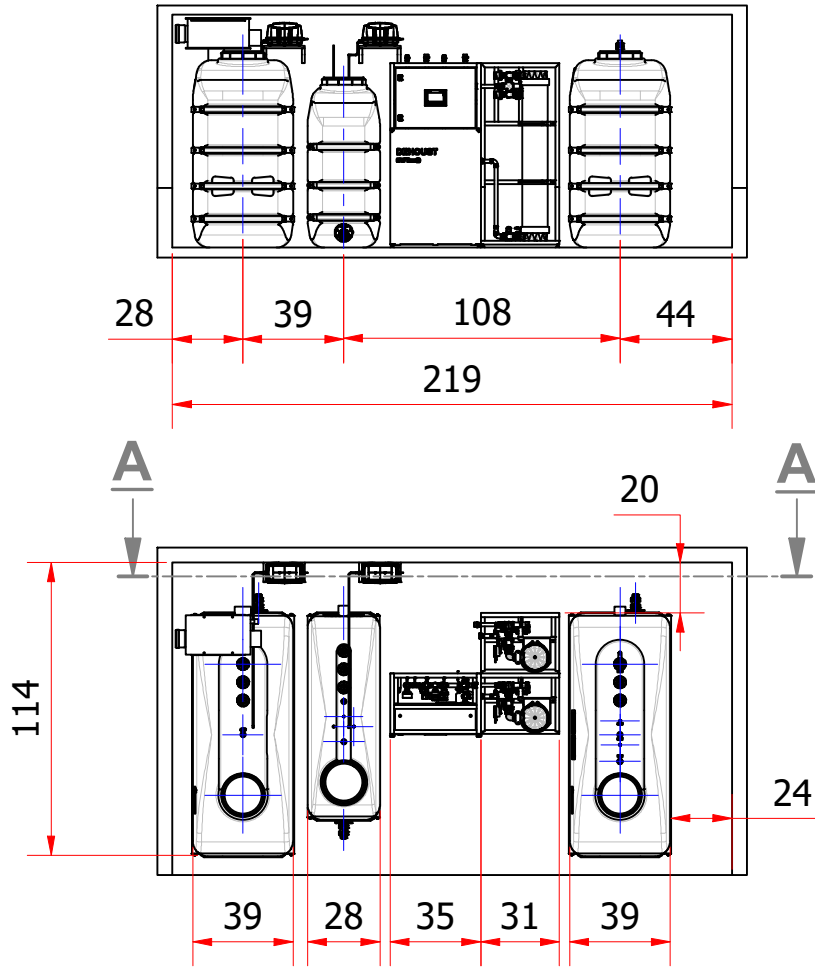
Installation of air compressor have to be above the max. water level
inside the greywater tank.

Dimensions in mm; distance to wall min. 300 mm.

*Height depends on the installation material

Technical change reserved. This installation example is subject to change.
All transactions are subject to our general terms and conditions.

 ISO Methode E		Bemerkungen/Comments: Allgemeintoleranzen/General tolerances DIN 28005-1		Vorlage-Zeichnung-Nr:	
Bearb.	Datum/Date	Name	Projekt-Nr.:	Artikel-Nr.:	Maßstab/Scale
	30.08.2024	jg		813372	
Gepr.			Kunde/Customer:		Werkstoff/Material
Norm.					
Medium			Kommission:		Gewicht/Weight
 69181 Leimen Gutenbergstraße 5-7 Tel 06224/97020			Behälterbezeichnung/Vessel designation		Behälter/Vessel-Nr.:
			Grauwasseranlage/Greywater System DEHOUST GWtec® 240_US_B		
			Zeichnungs/dwg-Nr.:	Auftrags/Order-Nr.:	Größe/Size: Blatt-Nr.: A3 Blattzahl: 2/3
			D631553		



all dimensions in inch

<p>ISO Methode E</p>		Bemerkungen/Comments: Allgemeintoleranzen/General tolerances DIN 28005-1		Vorlage-Zeichnung-Nr.:		
	Datum/Date	Name	Projekt-Nr.:	Artikel-Nr.:	Maßstab/Scale	
Bearb.	30.08.2024	jg		813372		
Gepr.			Kunde/Customer:		Werkstoff/Material	
Norm.						
Medium		Kommission:		Gewicht/Weight		
<p>69181 Leimen Gutenbergstraße 5-7 Tel 06224/97020</p>		Behälterbezeichnung/Vessel designation Grauwasseranlage/Greywater System DEHOUST GWtec® 240_US_B			Behälter/Vessel-Nr.:	
		Zeichnungs/dwg-Nr.: D631553		Auftrags/Order-Nr.:	Größe/Size: A4	Blatt-Nr.: 3 Blattzahl: 3