

## Description

The versatile plastic storage tank of the type PE-DF from high-density polyethylene (HD-PE) is resistant to a multitude of media up to a density of 1.15. HD-PE is physiologically safe and complies with the Recommendation III Polyethylene of the German Federal Institute for Consumer Health Protection and Veterinary Medicine [BfVV-Empfehlung III Polyethylen] (1 June 1998) and CEN 71. The untreated PE storage tank is designed for optimum storage in buildings. Depending on the needs, any number of tanks can be connected via standard accessories.

For special projects the tank can be customized with special connection pieces, as for example connection pieces with lapped flange.



tank group PE 2000 DF

## Set-Up and installation

Before installing and before filling, the containers should be checked for contamination inside and cleaned if necessary.


The tanks are installed horizontally on smooth, stable ground. The tank bottom stands completely on the surface. Ensure that the tanks are set up so that they cannot tip over and that there is sufficient distance from the wall and from other tanks by using the spacer elements (center distance PE 1100 - 2000 DF = 760mm, PE 2500 - 4000 DF = 1035mm).

Building regulations must be observed.

## Technical details

### Explanation

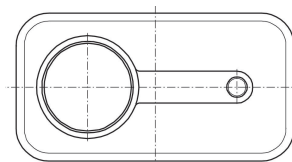
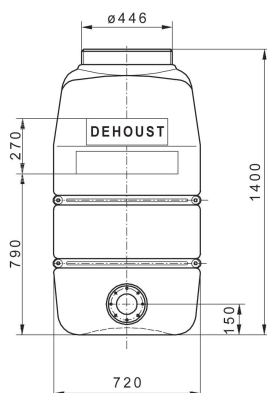
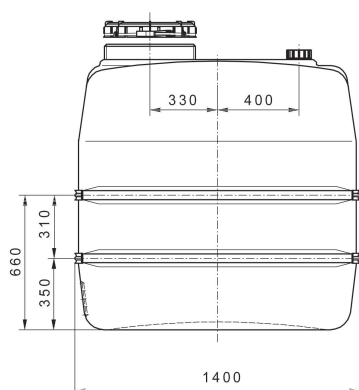
- ① Cleaning access DN 400, lid with tightening strap
- ② Cap nut with 2" threaded insert
- ③ Galvanised steel reinforcement
- ④ Moulded bottom flange, closed (hole circle 155 with 8 thread M 10, maximum 17 mm deep)

 Notice: no standard flange!



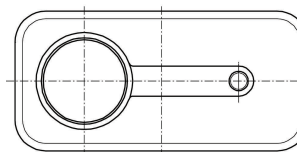
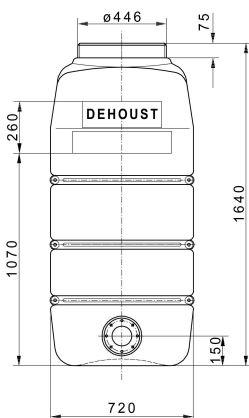
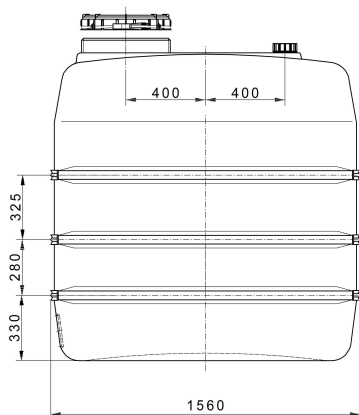
Dimensions and weight

PE 1100 DF



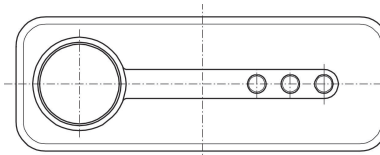
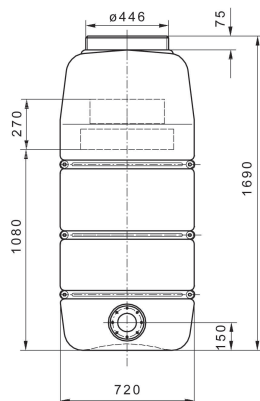
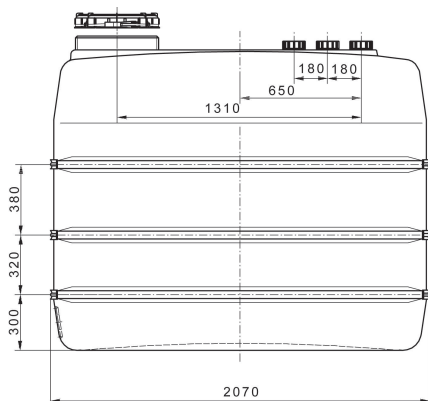
Item number	Description	Weight
971294	PE 1100 DF white	55 kg
971301	PE 1100 DF black	55 kg

PE 1500 DF



Item number	Description	Weight
971295	PE 1500 DF white	70 kg
971303	PE 1500 DF black	70 kg

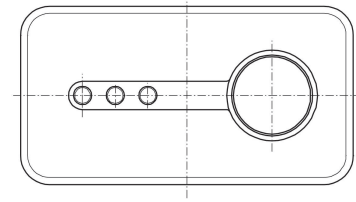
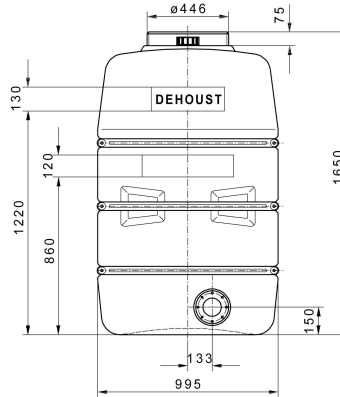
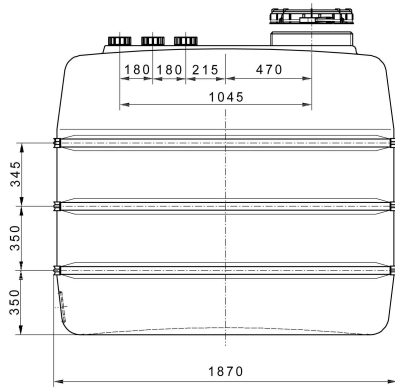
PE 2000 DF



Item number	Description	Weight
971253	PE 2000 DF white	110 kg
971305	PE 2000 DF black	110 kg

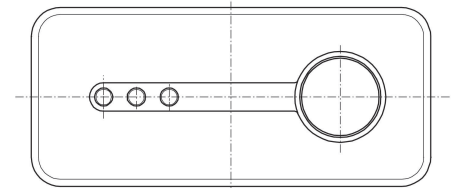
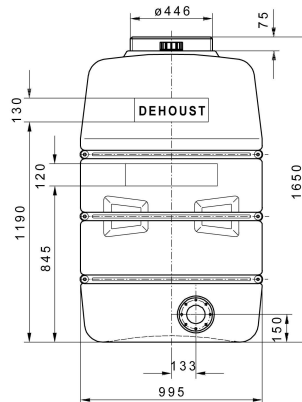
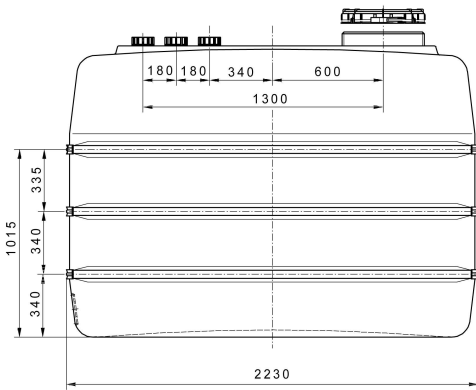
Dimensions and weight

PE 2500 DF



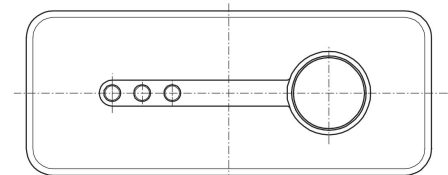
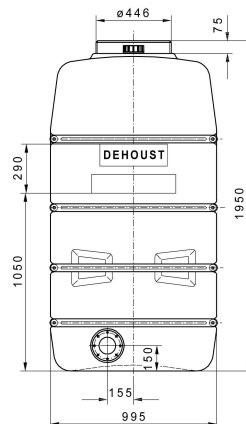
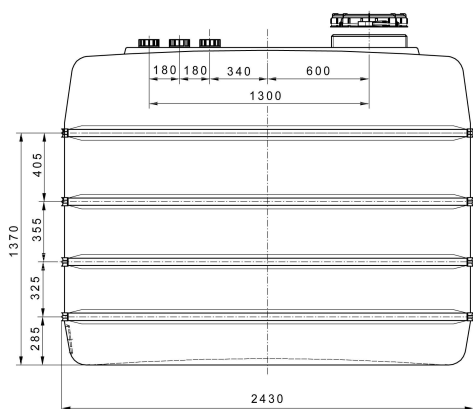
Item number	Description	Weight
971605	PE 2500 DF white	115 kg
971306	PE 2500 DF black	115 kg

PE 3000 DF



Item number	Description	Weight
971593	PE 3000 DF white	165 kg
971307	PE 3000 DF black	165 kg

PE 4000 DF



Item number	Description	Weight
971589	PE 4000 DF white	235 kg
971309	PE 4000 DF black	235 kg

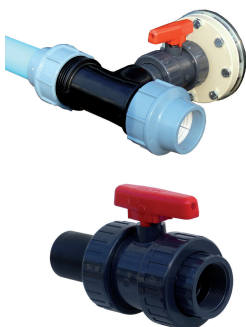
## Accessories for single tank

Item number	Description
971114	Plastic blank flange (PP)
971608	Plastic flange with thread R 2" (PP)
971602	Steel flange with thread R 2"
971641	Plastic flange with stopcock 1½"



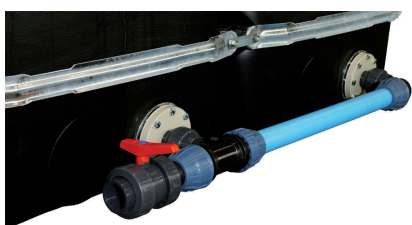
Plastic flange with stopcock 1½"

## Battery set up PE-DF with stopcock for each tank



Item number	Description
971565	Basis Kit DF DN 50 connecting pipe for 2 tanks with stopcock 1½"
971570	Extension Kit DF DN 50 connecting pipe with stopcock 1½"
71645	Stopcock DN 50/2" for shut off connecting pipe

## Battery set up without individual shutoff device



Item number	Description
971555	Basis Kit DF DN 50 for 2 tanks without individual shutoff device
971560	Extension Kit DF DN 50 for each additional tank without individual shutoff device
71645	Stopcock DN 50/2" for shut off connecting pipe

## Accessories for level measuring and venting



Item number	Description
900074	Level gauge for DF tank
62276	Vent cap 2"

For more information please visit  
[www.dehoust.com](http://www.dehoust.com)  
 and enter the item number.

The information in this brochure is subject to change without notice. We reserve the right to make technical changes without prior notice. The suitability of the tanks must be enquired about in individual cases. The country-specific approvals and installation regulations must be observed.